

ZOOMLION TRUCK CRANE ZMC1000V



ZOOMLION

Zoomlion Heavy Industry Science & Technology Co.,Ltd.

Add: No.677, Lugu Road, Zoomlion Industrial Park, Changsha, Hunan, China, 410205

Copyright©2023 Zoomlion. All rights reserved. Reproduction and copying of any part of contents is not allowed for any purposes without Zoomlion's approval.



Product specifications are subject to change without notice and obligation. The photographs and/or drawing in this document are for illustrative purposes only. Please consult your local ZOOMLION dealer for more information.
website:en.zoomlion.com 2023.07.07

ZOOMLION

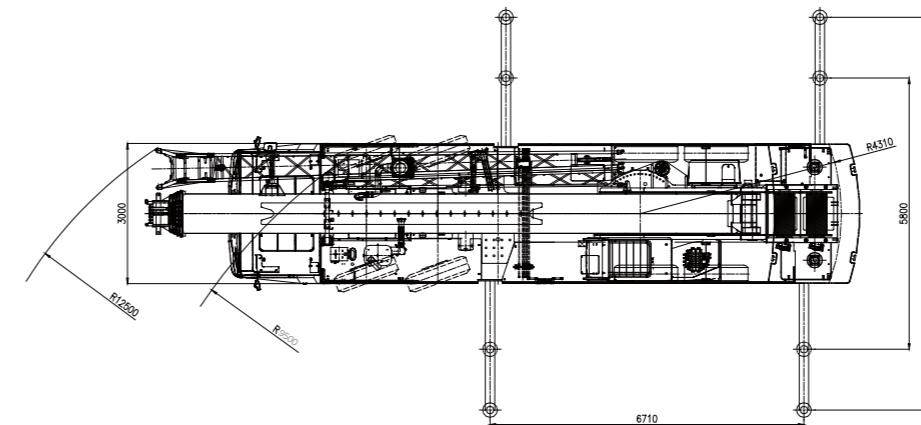
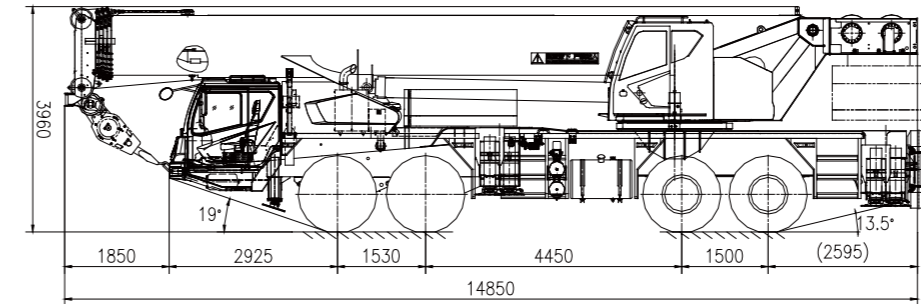
4.0
PRODUCTS

CONTENTS

| | |
|-----------------------------------|-----|
| DIMENSIONS | 2 |
| BOOM / JIBS COMBINATION | 2 |
| CRANE AND COMPONENT WEIGHTS | 3 |
| LIFTING CAPACITY TABLES | 4-5 |
| TECHNICAL SPECIFICATIONS | 6 |
| MAIN TECHNICAL PARAMETERS | 6 |

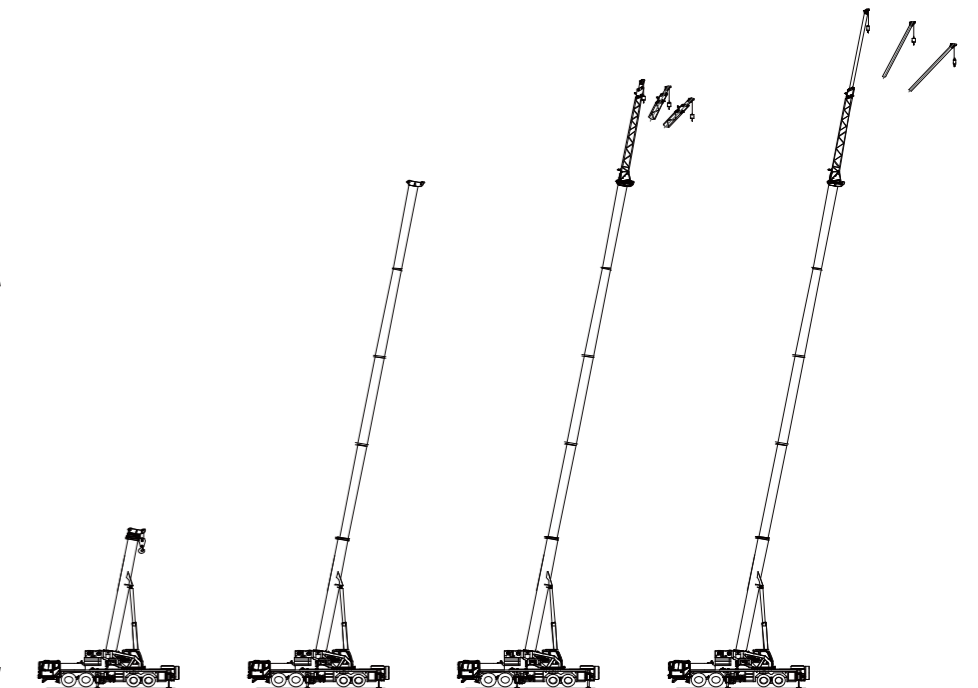
DIMENSIONS

Unit: mm



MAIN BOOM+JIB

| Working Condition | Boom/Jib Length |
|-------------------------|-------------------------|
| Main boom | Main boom |
| Main boom+Jib section 1 | Main boom+Jib section 1 |
| Main boom+Jib section 2 | Main boom+Jib section 2 |



CRANE AND COMPONENT WEIGHTS

| Axle | 1 | 2 | 3 | 4 | Total weight |
|------|----|----|----|----|--------------|
| T | 12 | 12 | 12 | 12 | 48 |

Hook Detailed Description

| Specification | No. of Sheaves | Weight (t) | Max. reeving | Standard/optional configuration |
|---------------|----------------|------------|--------------|--|
| 60 | 5 | 510 | 10 | Straight shank with single hook (standard) |
| 8 | - | 125 | 1 | Standard/ |
| 80 | 6 | 685 | 12 | Straight shank with single hook (optional) |
| 70 | 6 | 689 | 12 | Straight shank with single hook (optional) |
| 60 | 6 | 662 | 12 | Straight shank with double hook (optional) |
| 35 | 3 | 380 | 6 | Straight shank with single hook (optional) |

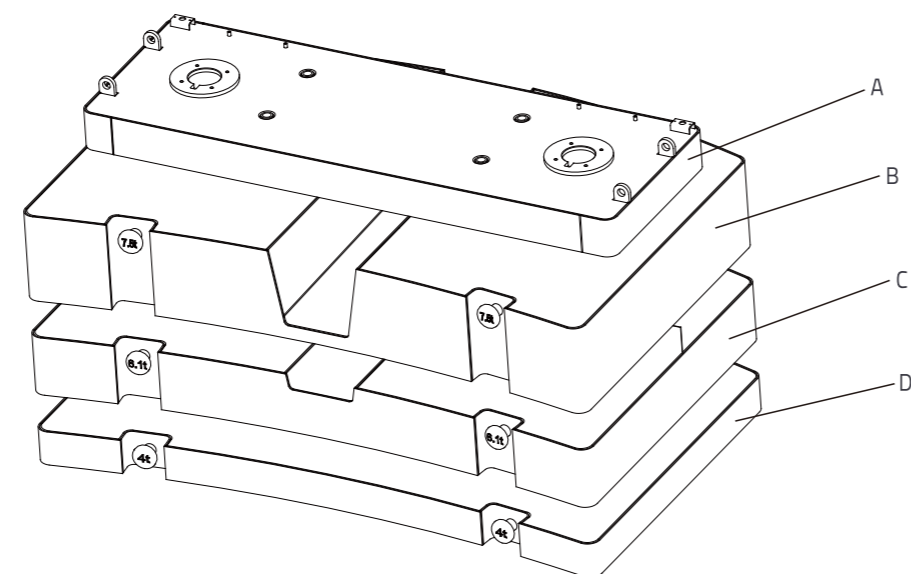
Working speed

| Icon | km/h MAX. | Icon | Icon |
|-----------|-----------|------|---|
| 385/95R25 | 89 | 50 | Forward gear 13.04/10.07/7.7/5.95/4.57/ 3.53/2.85/2.2/1.68/1.3/1.00/ 0.77 Reverse gear 11.98/9.25 |

| Drive | Operation Speed | Rope diameter/length | Max. single line pull |
|-------|-----------------|----------------------|-----------------------|
| 1 | 130m/min | Φ 20mm/260m | 6500Kg |
| 2 | 130m/min | Φ 20mm/200m | 6500Kg |
| 360 | 0-1.6r/min | | |
| Icon | 65/s | | |
| Icon | 145/s | | |

Counterweight

| Counterweight | Size(L*W*H) Mm | Weight T | 0.4T | 4.4T | 10.5T | 18T |
|---------------|----------------|----------|------|------|-------|-----|
| A | 2830×958×200 | 0.4 | 1 | 1 | 1 | 1 |
| B | 2980×1959×460 | 7.5 | | | | 1 |
| C | 2980×1959×312 | 6.1 | | | 1 | 1 |
| D | 2980×1959×180 | 4 | | 1 | 1 | 1 |



LIFTING CAPACITY TABLES

Unit: t

| Working radius (m) | Main boom length m | | | | | | | | |
|--------------------|--|------|------|------|------|------|------|------|------|
| | Telescoping Cylinder I extended to 100%, outriggers fully extended 8.4m, side and rear operations, 18t counterweight | | | | | | | | |
| | 12.7 | 17.5 | 22.2 | 27.0 | 31.8 | 36.6 | 41.4 | 46.2 | 50.0 |
| 3.0 | 100.0** | 70.0 | 50.0 | | | | | | |
| 3.5 | 80.0* | 70.0 | 50.0 | | | | | | |
| 4.0 | 76.0 | 70.0 | 50.0 | 38.0 | | | | | |
| 4.5 | 73.0 | 70.0 | 50.0 | 38.0 | | | | | |
| 5.0 | 70.0 | 65.0 | 50.0 | 38.0 | 36.0 | | | | |
| 5.5 | 64.0 | 60.0 | 48.0 | 38.0 | 36.0 | | | | |
| 6.0 | 58.0 | 55.0 | 46.5 | 37.0 | 36.0 | | | | |
| 7.0 | 48.0 | 47.0 | 42.0 | 36.0 | 35.0 | 31.0 | | | |
| 8.0 | 41.5 | 41.0 | 38.0 | 34.0 | 33.0 | 30.0 | 22.0 | | |
| 9.0 | 36.0 | 35.5 | 35.0 | 32.0 | 30.0 | 28.0 | 22.0 | 19.0 | |
| 10.0 | | 30.5 | 30.0 | 29.0 | 27.5 | 26.0 | 21.0 | 18.0 | 14.5 |
| 12.0 | | 21.5 | 21.5 | 23.0 | 24.0 | 22.0 | 18.5 | 16.0 | 13.5 |
| 14.0 | | | 16.0 | 17.4 | 18.2 | 18.9 | 16.0 | 14.0 | 13.0 |
| 16.0 | | | 12.0 | 13.5 | 14.3 | 14.9 | 14.5 | 12.5 | 11.5 |
| 18.0 | | | | 10.7 | 11.5 | 12.0 | 12.5 | 11.5 | 10.5 |
| 20.0 | | | | 8.5 | 9.4 | 9.8 | 10.3 | 10.5 | 9.5 |
| 22.0 | | | | 6.8 | 7.7 | 8.2 | 8.6 | 8.9 | 8.6 |
| 24.0 | | | | | 6.3 | 6.8 | 7.2 | 7.5 | 7.6 |
| 26.0 | | | | | 5.0 | 5.7 | 6.0 | 6.3 | 6.6 |
| 28.0 | | | | | | 4.7 | 5.1 | 5.5 | 5.6 |
| 30.0 | | | | | | 4.0 | 4.3 | 4.6 | 4.8 |
| 32.0 | | | | | | | 3.6 | 3.9 | 4.1 |
| 34.0 | | | | | | | 3.0 | 3.3 | 3.5 |
| 36.0 | | | | | | | | 2.8 | 3.0 |
| 38.0 | | | | | | | | 2.3 | 2.5 |
| 40.0 | | | | | | | | | 2.1 |
| 42.0 | | | | | | | | | 1.7 |
| I | 0 | 4.8 | 9.5 | 9.5 | 9.5 | 9.5 | 9.5 | 9.5 | 9.5 |
| II | 0 | 0 | 0 | 4.8 | 9.6 | 14.4 | 19.2 | 24.0 | 27.8 |
| Reeving hook | 12 | 11 | 8 | 7 | 6 | 5 | 4 | 3 | 3 |
| | | | | | | | | | 60t |

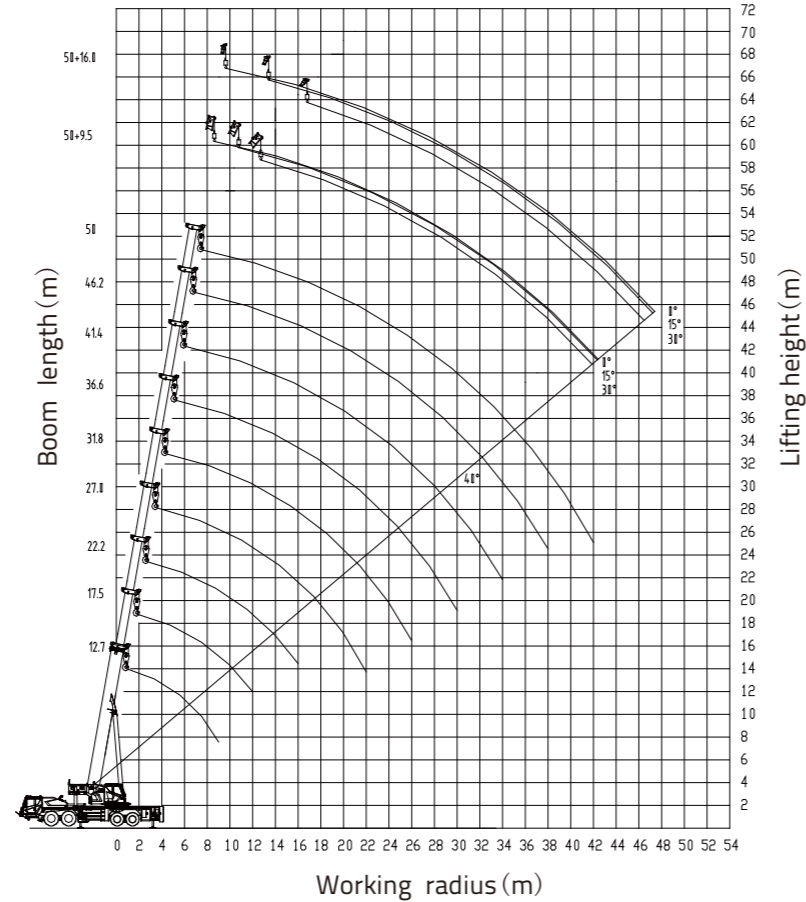
Unit: t

| Working radius (m) | Main boom length m | | | | | | | |
|--------------------|--|------|------|------|------|------|------|------|
| | Telescoping Cylinder I extended to 100%, outriggers fully extended 8.4m, side and rear operations, 18t counterweight | | | | | | | |
| | 12.7 | 17.5 | 22.3 | 27.1 | 31.9 | 36.7 | 41.5 | 45.3 |
| 3.0 | 100.0** | 70.0 | 38.0 | | | | | |
| 3.5 | 80.0* | 70.0 | 38.0 | | | | | |
| 4.0 | 76.0 | 70.0 | 38.0 | 36.0 | | | | |
| 4.5 | 73.0 | 70.0 | 38.0 | 36.0 | | | | |
| 5.0 | 70.0 | 65.0 | 38.0 | 36.0 | 30.0 | | | |
| 5.5 | 64.0 | 60.0 | 38.0 | 36.0 | 30.0 | | | |
| 6.0 | 58.0 | 55.0 | 38.0 | 36.0 | 30.0 | 22.0 | | |
| 7.0 | 48.0 | 47.0 | 38.0 | 36.0 | 30.0 | 22.0 | | |
| 8.0 | 41.5 | 41.0 | 36.0 | 36.0 | 30.0 | 22.0 | 19.5 | |
| 9.0 | 36.0 | 35.5 | 34.0 | 35.0 | 29.0 | 21.0 | 18.5 | 16.0 |
| 10.0 | | 31.0 | 32.0 | 33.0 | 27.0 | 20.0 | 17.5 | 15.0 |
| 11.0 | | 27.0 | 28.0 | 29.5 | 26.0 | 18.7 | 16.5 | 14.0 |
| 12.0 | | 23.5 | 24.5 | 26.0 | 24.0 | 17.5 | 15.5 | 13.5 |
| 14.0 | | | 19.3 | 20.3 | 20.8 | 15.2 | 13.5 | 12.5 |
| 16.0 | | | | 15.2 | 16.1 | 16.6 | 13.5 | 12.0 |
| 18.0 | | | | | 13.0 | 13.5 | 12.2 | 10.6 |
| 20.0 | | | | | 10.7 | 11.2 | 11.0 | 9.6 |
| 22.0 | | | | | 8.9 | 9.4 | 9.9 | 9.0 |
| 24.0 | | | | | | 8.0 | 8.4 | 8.2 |
| 26.0 | | | | | | 6.8 | 7.2 | 7.0 |
| 28.0 | | | | | | | 6.2 | 6.3 |
| 30.0 | | | | | | | 5.3 | 5.6 |
| 32.0 | | | | | | | | 5.0 |
| 34.0 | | | | | | | | 4.3 |
| 36.0 | | | | | | | | 3.9 |
| 38.0 | | | | | | | | 3.4 |
| I | 0 | 4.8 | 4.8 | 4.8 | 4.8 | 4.8 | 4.8 | 4.8 |
| II | 0 | 0 | 4.8 | 9.6 | 14.4 | 19.2 | 24.0 | 27.8 |
| Reeving hook | 12 | 11 | 8 | 7 | 6 | 5 | 4 | 3 |
| | | | | | | | | 60t |

LIFTING CAPACITY TABLES

Unit: t

| Working radius (m) | Main boom length m | | | | | | |
|--------------------|--|------|------|------|------|------|------|
| | Telescoping Cylinder I extended to 100%, outriggers fully extended 8.4m, side and rear operations, 18t counterweight | | | | | | |
| | 12.7 | 17.5 | 22.3 | 27.1 | 31.9 | 36.7 | 40.5 |
| 3.0 | 100.0* | 38.0 | 36.0 | | | | |
| 3.5 | 80.0* | 38.0 | 36.0 | | | | |
| 4.0 | 76.0 | 38.0 | 36.0 | 30.0 | | | |
| 4.5 | 73.0 | 38.0 | 36.0 | 30.0 | | | |
| 5.0 | 70.0 | 38.0 | 36.0 | 30.0 | 22.0 | | |
| 5.5 | 64.0 | 38.0 | 36.0 | 30.0 | 22.0 | | |
| 6.0 | 58.0 | 38.0 | 36.0 | 30.0 | 22.0 | 21.0 | |
| 7.0 | 48.0 | 38.0 | 36.0 | 30.0 | 22.0 | 20.0 | |
| 8.0 | 41.5 | 38.0 | 34.0 | 28.0 | 20.5 | 18.7 | 17.0 |
| 9.0 | 36.0 | 36.0 | 32.0 | 26.0 | 19.0 | 17.2 | 16.0 |
| 10.0 | | 33.0 | 31.0 | 24.0 | 17.5 | 16.0 | 15.0 |
| 11.0 | | 30.0 | 30.0 | 22.0 | 16.0 | 14.5 | 14.0 |
| 12.0 | | 26.0 | 27.0 | 20.5 | 15.0 | 13.5 | 13.0 |
| 14.0 | | | 21.0 | 18.0 | 13.0 | 12.0 | 11.3 |
| 16.0 | | | 16.7 | 16.0 | 11.5 | 10.5 | 10.0 |
| 18.0 | | | | 14.3 | 10.3 | 9.4 | 9.0 |
| 20.0 | | | | 12.0 | 9.3 | 8.4 | 8.0 |
| 22.0 | | | | 10.2 | 8.5 | 7.7 | 7.2 |
| 24.0 | | | | | 7.8 | 7.0 | 6.6 |
| 26.0 | | | | | 7.1 | 6.4 | 6.0 |
| 28.0 | | | | | | 5.8 | 5.4 |
| 30.0 | | | | | | 5.4 | 5.0 |
| 32.0 | | | | | | | 4.6 |
| 34.0 | | | | | | | 4.2 |
| I | 0 | 0 | 0 | 0 | 0 | 0 | 0 |
| II | 0 | 4.8 | 9.6 | 14.4 | 19.2 | 24.0 | 27.8 |
| Reeving hook | 12 | 11 | 8 | 7 | 6 | 5 | 4 |
| | | | | 60t | | | |



TECHNICAL SPECIFICATIONS

Superstructure

Strong Lifting Performance

- Max. lifting moment of basic boom is 3430kN.m, Max. lifting moment of fully extended boom is 1862kN.m, both lead the industry.
- Max. lifting capacity of fully extended boom is 14.5T, Max. lifting height of boom + 16m jib is 67.2m.
- Innovative plate boom head and compact boom tail features the optimized overlap ratio and stronger lifting capacity.
- Two-stage H-shaped outrigger span 6.71m by 8.4m, total 18T CWTs, and enables a superior lifting stability.

Robust & Excellent Driving Experience

- WEICHAI engine + SHANXI Gear 12 speed automatic transmission + four wheel steering, provides superior driving performance.
- 3.0m wide chassis platform features better lateral stability during driving.
- Large load-bearing chassis platform, can transit with a 18T CWTs. Adequate space to secure outrigger pads on the chassis.

Great Intelligence & Comfort

- Driver's cab features a standard sleeper, 9 inch multimedia system, integrated with reverse monitor.
- Large space operator's cab features 10 inch touch screen LMI, integrated with winch monitoring function.

MAIN TECHNICAL PARAMETERS

| Item | | Value | Remarks |
|----------------------------|---|-------|---------------------------|
| Working performance | Max. rated lifting capacity | t | 100 |
| | Max. load moment of basic boom | t.m | 350 |
| | Max. load moment of main boom(fully extended) | t.m | 190 |
| | Max. lifting height of basic boom | m | 14.2 |
| | Max. lifting height of main boom | m | 51.0 |
| Max. lifting height of jib | m | 67.2 | |
| Working speeds | Max. hoist rope speed (main winch) | m/min | 130 |
| | Boom derricking up time | s | 65 |
| | Boom extending time | s | 145 |
| | Slewing speed | r/min | 0 1.6 |
| Driving | Max.operation altitude | m | 2000 |
| | Max. driving speed | km/h | 89 |
| | Max. gradeability | % | 50 |
| | Min. turning diameter | m | 19 |
| | Min. ground clearance | mm | 345 |
| | Oil consumption per hundred kilometers | L | 41 |
| Mass | Deadweight in driving condition | kg | 48000 |
| | Complete vehicle kerb mass | kg | 47870 |
| | Front axle load | kg | 24000 |
| | Rear axle load | kg | 24000 |
| Dimension | Overall dimensions (L×W×H) | mm | 14800*3000*3960 |
| | Longitudinal distance between outriggers | m | 6.71 |
| | Transversal distance between outriggers | m | Completely extended: 8.4. |
| | Slewing radius of counterweight | mm | 4310 |
| | Main boom length | mm | 12700-50000 |
| | Boom angle | ° | -1 80 |
| | Jib length | m | 9.5 16.0 |